



Evacuation Plan

The Village of Alix

This evacuation plan is a working document and is subject to change as situations or conditions warrant

The Village of Alix Emergency Evacuation by Zone Response Plan

Introduction:

The objective of the Alix Emergency Evacuation Response Plan is to minimize the effects of an emergency requiring the Village of Alix to be vacated. The plan sets out recommended guidelines for coordinating the actions of different agencies in the community that could be of assistance in responding to an evacuation order. The recommended guidelines included in the plan are general to allow for flexibility when responding to an ever-changing scenario. This document is meant to be a guide for the Incident Commander to respond to an evacuation event.

The Village of Alix will utilize the standardized Incident Command System (ICS) in any response to a disaster or significant hazard.

A State Of Local Emergency (SOLE) must be declared by the Municipality before the local authority can order an evacuation of residents. A local authority may issue public warnings, evacuation alerts, advisories, and other relevant information without a SOLE in place.

General Procedure:

The Director of Emergency Management shall ensure that if any emergency or disaster makes it necessary to evacuate all or any portion of the Village of Alix, the following procedures will be followed:

Notification:

- (1) The Director of Emergency Management (DEM) will be notified by any first response agencies of a threat or need to evacuate residents.
- (2) The Director of Emergency Management (DEM) will ensure an Emergency Response, that the following actions are taken by Incident Command System (ICS) protocols:
 - a) Various departments and agencies are alerted and mobilized as required.
 - b) Recommend to elected officials to declare a state of local emergency, if necessary
 - c) The Lacombe Regional Emergency Partnership is advised.
 - Assist in determining all or any zones of the municipality that must be evacuated and, if so, in what order.
 - d) Advise the Directors of Emergency Management (DEM) in neighboring communities intended to receive evacuees to activate their Reception Centre Plans should the need for an evacuation occur. Also, provide the expected numbers and times of arrival for evacuees.
 - e) Ensure alerts are sent to key agencies and institutions including but not limited to all surrounding schools, the Regional Health Authority, etc.
 - f) Assess the need for mutual aid assistance.
 - g) Ensure Alberta Municipal Affairs, Emergency Management Alberta is notified.
- (3) Ensure an Evacuation Alert is sent to the public to evacuate, and the coordination of evacuation operations is initiated.
- (4) Ensure an Evacuation Order is sent to the public to evacuate, and the coordination of evacuation operations is initiated.

Evacuation Alert:

Stage 1: An Evacuation Alert:

This is to inform the community of a potential or current threat that could lead to an Evacuation Order. It provides impacted, at-risk, population information to begin preparations to evacuate. It should be structured to provide timely and accurate information; it may not always be possible to issue an Evacuation Alert before an Evacuation Order.

Voluntary Evacuation Notice:

May be utilized as a part of the greater Lacombe Regional Emergency Management Plan agreement.

- The Public Information Officer (PIO) will notify affected individuals through various communication channels of the potential need to evacuate. Common channels include the Villages website, the Alberta Emergency Alert system, Radio, and door-to-door if time permits.
- Information will be provided regarding the nature of the hazard and suggested actions to be taken.
- Situation updates on potentially hazardous conditions will be provided on an ongoing basis.

An Evacuation Alert:

Should contain the following:

- The issuing authority.
 - The reason for the Alert includes a hazard description.
 - Duration of the evacuation.
 - The areas under Alert, with as much detail as possible.
 - Recommended evacuation routes and identification of closed routes.
 - Location of reception centers/shelters and collection points.
 - What personal belongings to prepare and take (limitations if applicable)?
 - Where to get additional information.
- Depending on the hazard, an Evacuation Order may be issued without a prior Evacuation Alert / Voluntary Evacuation Notice being issued.

*****See Appendix A for a sample Voluntary Evacuation Insert *****

Stage 2: Evacuation Order:

When an evacuation order is issued the impacted population should leave the area immediately. An Evacuation Order will provide the same information as the Evacuation Alert but will include the fact that it is a

Mandatory Evacuation Order.

- Sweep: After an Evacuation Order has been issued, plans should be put in place to conduct a sweep of the evacuation area to ensure that all those at risk are aware of the need to evacuate.

*****See Appendix A for a sample Mandatory Evacuation Insert *****

Stage 3: Evacuation Rescind:

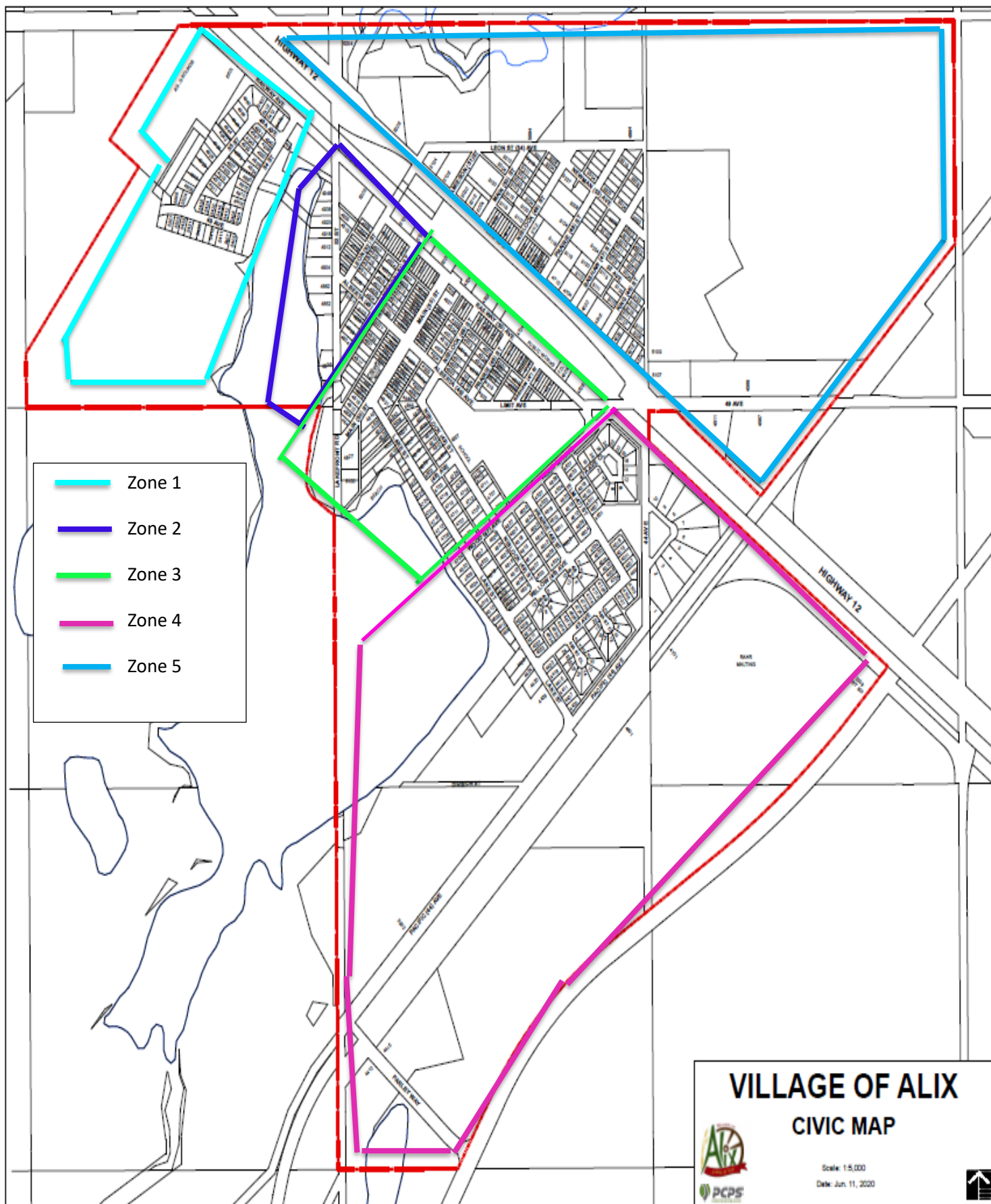
The decision to rescind an Evacuation Order should occur when the DEM or designate, in consultation with the Incident Command (IC), determines that it is safe to return.

An Evacuation Rescind should include:

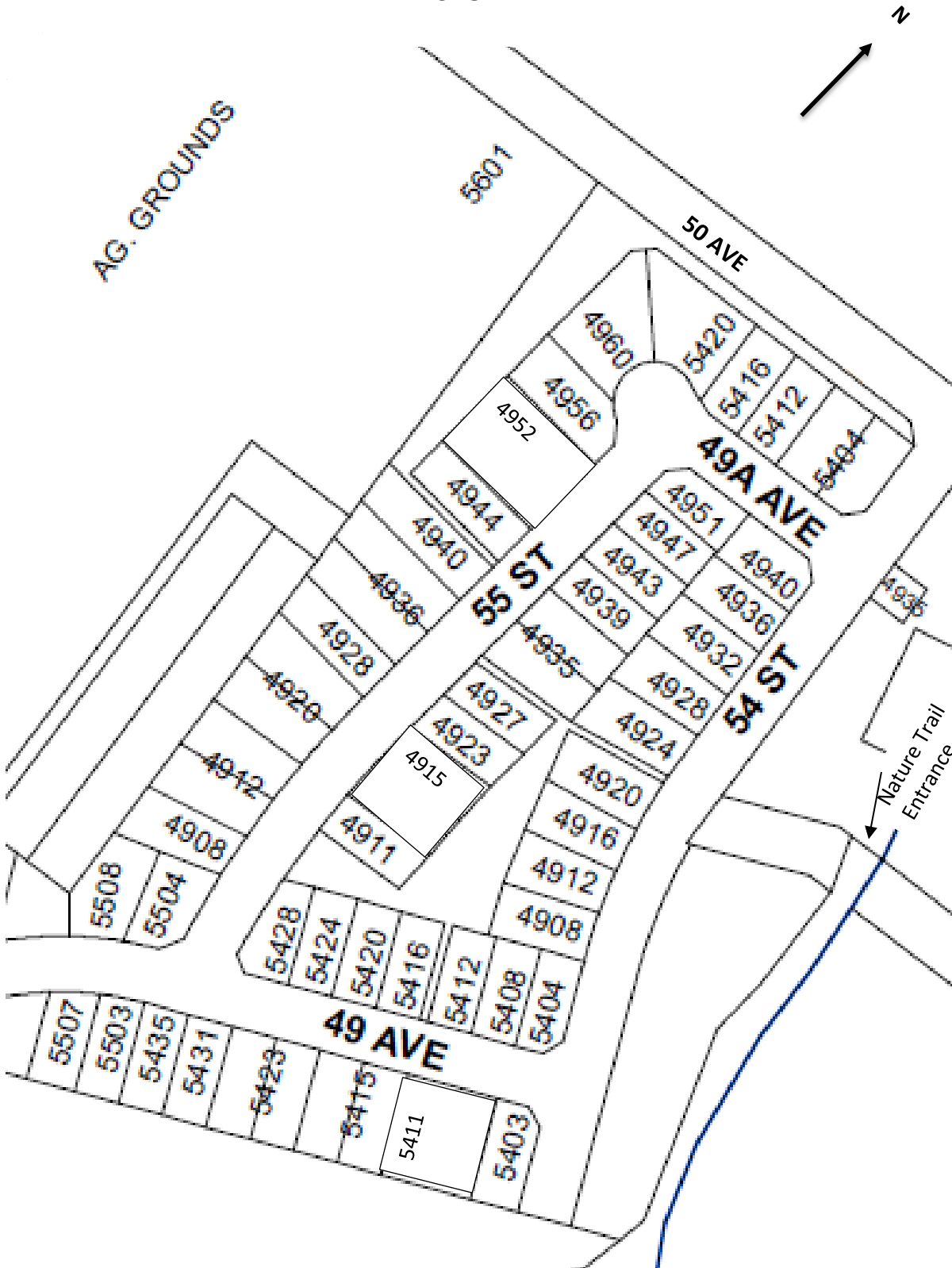
- The issuing authority.
- The areas under Rescind with as much detail as possible.
- Specific timings for return.
- Details if a phased return is applicable.
- Recommended routes and identification of closed routes.
- Where to get additional information. Multiple dissemination methods shall be utilized to capture as wide an audience as possible.

Evacuation Zones:

_As part of evacuation planning, the Village of Alix has identified evacuation Zones. These zones specify by area evacuation planning and response. This will allow officials to issue Evacuation Alerts and Orders to specific areas. Evacuation Zones allow officials to provide residents and visitors with clarity on what actions they need to take based on their location and proximity to the identified hazard.



Zone 1



Zone 1

49 Avenue

5007 – 5403

5508 – 5404

55 Street

4911 – 4951

4960 – 4908

49 A Avenue

5404 – 5420

54 Street

4940 – 4908

Key considerations:

Agriculture Grounds: 1

Apartments: 6

Nature Trail Entrance

Parks: 1

Pump House: 1

Residential Housing: 48

Exit from Alix

The Village of Alix has identified means of exit. (These exits are subject to change)

1. Left on 50 Avenue.
2. Right to 50 Avenue turn left onto 52 Street and proceed over the railway track to Highway 12.



Zone 2

52 Street (VPR)

4924 – 4912

4935 – 5108

51 Street (VPR)

4924 – 4824

4927 – 4817

50 Street

4936 - 4938

50 Avenue

5008 – 4604

5019 – 5017

53 Street

4948 – 4804

4935 – 4910

49 Avenue

5108 – 5008

5103 – 5007

Key considerations:

Apartments: 16

Bulk Water Station: 1

Commercial Residential: Alix Hotel, Chicken Loise, Ye Old Nook.

Community Hall: 300 occupancies

Condo: 7

Dump Station: 1

Lift Station: 1

Parks: 2

Residential Housing: 28

Exit from Alix

The Village of Alix has identified means of exit. (These exits are subject to change)

1. 52 Street proceed to Highway 12.
2. 53 Street – 50 Avenue turn left proceed west.



Zone 3



Zone 3

50 Street

4935 – 4801

49 Street (VPR)

4828 – 4704

4927 – 4703

Lake Street

4840 – 4706

4843 – 4703

48 Street

4628 – 4916

4931 – 4903

Lake Front Road

11 – Campsites

50 Avenue

4905 – 4705

4904 – 4704

Key considerations:

Apartments: 5

Beach

Boat Launch

Camp Sites: 11

Church: Alix United Church: 120 occupancies

Commercial Residential: 1 Food Town

Dog Rescue: 1 Saving Grace

Park's: 1

Residential Housing: 83

School Alix MAC: Students: 259 Staff: 27

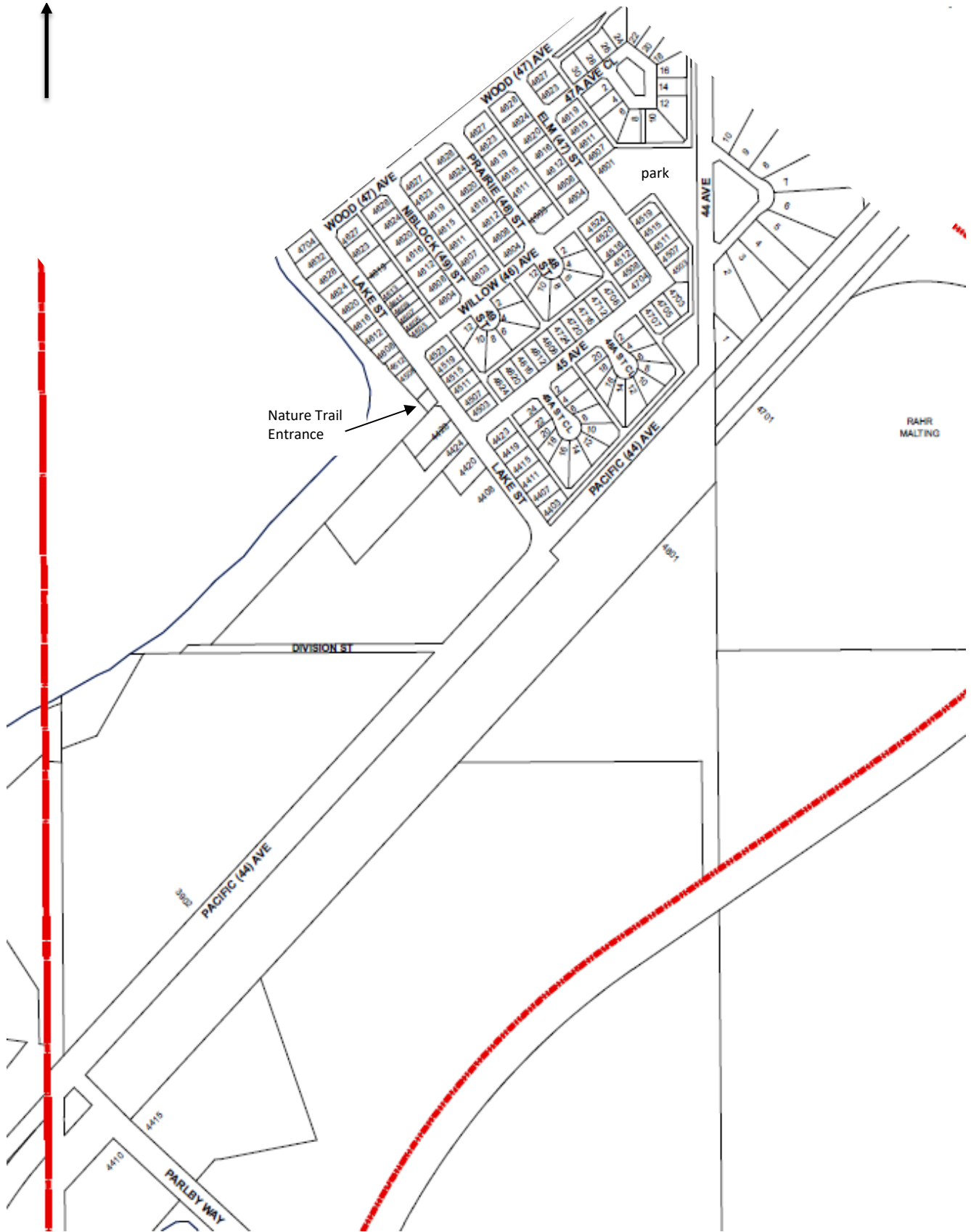
Exit from Alix

The Village of Alix has identified means of exit. (These exits are subject to change)

1. Exit 44 Avenue Southbound.
2. 47 Avenue to Highway 12.



Zone 4



Zone 4

Lake Street

4704 – 4408

4726 – 4403

49 Street

4628 – 4604

4627 – 4603

48 Street

4628 – 4604

4627 – 4603

48 A Street Close

2 – 20

47 A Street Close

2 – 30

47 Street

4627 – 4503

4628 – 4604

Parlby Way

4415

44 Avenue

3902 - 4801

Key considerations:

Church: Alix Evangelical Free Church: 120 occupancies

Day Care: Bibs to Book Bags: Max 36 children

Nature Trail Entrance

Parks: 1

Rahr Malting: Staff: 42

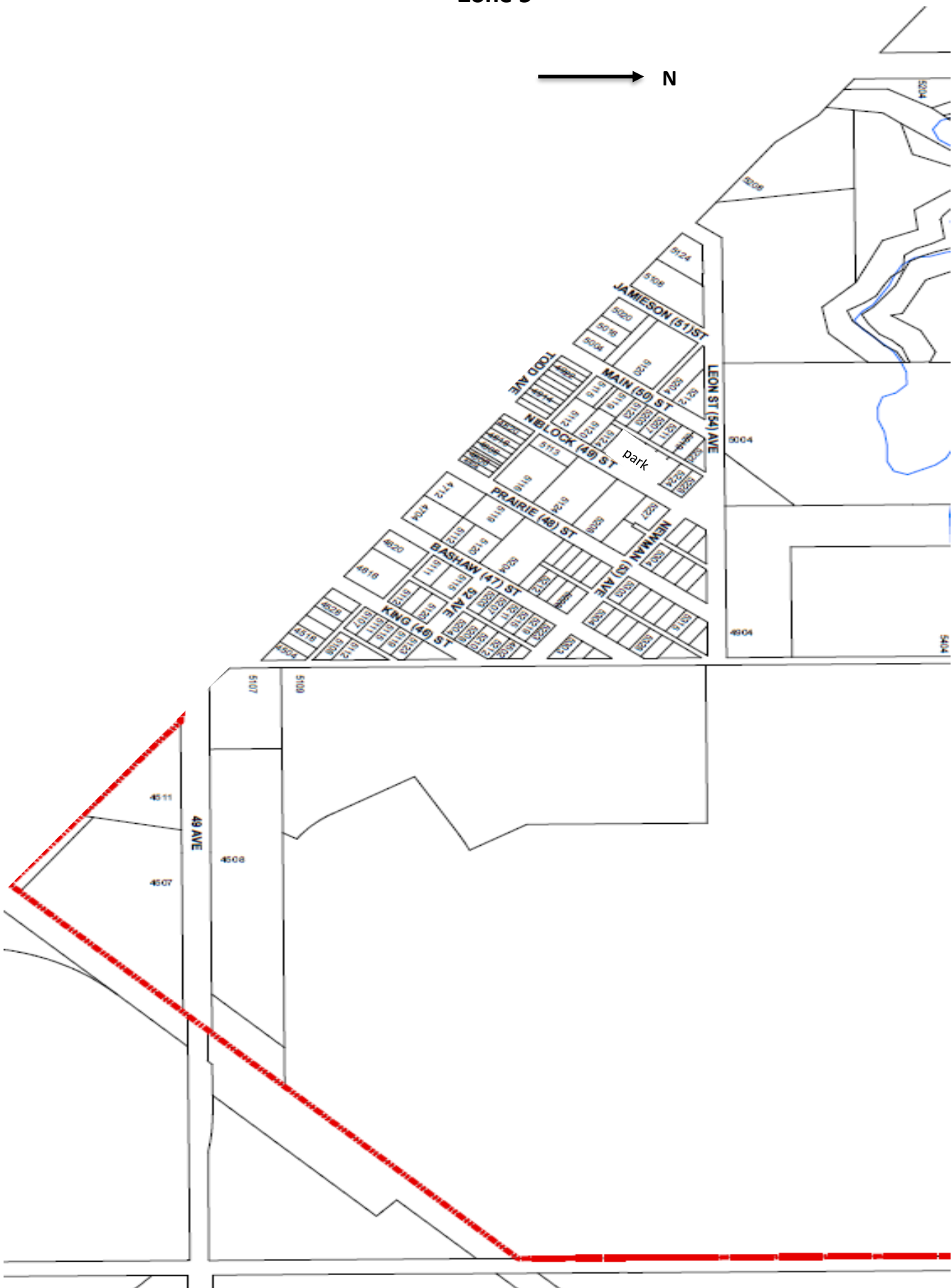
Residential Housing: 117

Exit from Alix

The Village of Alix has identified means of exit. (These exits are subject to change)

1. Exit 44 Avenue Southbound.
2. 47 Avenue to Highway 12.

Zone 5



Zone 5

51 Avenue

5204 – 5404

45 Street

5107 – 4904

46 Street

5107 – 5123

5112 – 5212

47 Street

5111 - 5303

5112 - 5328

48 Street

5115 – 5221

5120 – 5212

49 Street

4904 - 5004

50 Street

5119 – 5315

5116 – 5208

54 Avenue

5113 – 5227

5112 – 5228

44 Avenue

4801 – 3902

49 Avenue

4507 – 4511

Key considerations:

Commercial Residential: 2 Alix INN, Fast Gas

Parks: 1

Residential Housing: 56

Exit from Alix

The Village of Alix has identified means of exit. (These exits are subject to change)

1. Eastbound or Westbound
2. Range Road 230

Main Reception Centres and Collection Points for the Village of Alix

Community Centre 5008 49 Avenue.: 300 occupancies

Alix Mac Public School 4807 49 Street: 259 Students, 27 Staff

Alix Agricultural Grounds 5601 50 Avenue: 150 occupancies

Lions Den: 60 occupancies

These centers are to be used for all Zones.

The Director of Emergency Management will identify alternate centers should the need arise.

Evacuation Phasing:

The Village of Alix recognizes that a large single Evacuation Order can inhibit overall traffic movement on points of egress from the Village, creating an additional hazard and reducing the effectiveness of the overall evaluation process. Evacuation phasing may be utilized, so people evacuate in stages, rather than all at once, to reduce congestion on roadways. Whenever possible, a phased evacuation will be used.

Strategies include:

1. Issuing evacuation orders that begin evacuations in divisions closest to the hazard first, and then working away from the hazard. This ensures that people most at risk are moved out of the hazard area first.
2. Evacuating the neighborhoods with the densest population areas first, as this will take the longest to evacuate.
3. Allowing people, who will take more time to evacuate (assisted living facilities), to leave first to ensure they have the time they need to evacuate safely.

Destination Assignment:

Another strategy in an evacuation is to assign evacuees to specific destinations. Destination assignment involves assigning evacuees to specific routes and destinations to decrease congestion on main evacuation routes. This strategy involves asking or directing evacuees, or in a worst-case scenario implementing roadblocks to ensure compliance to a specific route or destination. While destination assignment is an option, it is preferred that people can select their route and destination, as they are more likely to have support at their preferred destination. If circumstances justify destination assignment, it is preferred that it be voluntary. Making destination assignment mandatory by way of a roadblock should be a last-resort option, as it can force people to unfamiliar areas where they lack support, and separate families and friends. Only in the most immediately life-threatening situations should people be evacuated without being able to gather their family, friends, and pets.

Traffic Management Strategies:

Traffic diversion may be implemented by the Incident Commander (IC), Police, Fire Services and Public Works may be involved. Diversion (detour) may be used to decrease congestion in the event of an evacuation. Diversion is directing people to alternate or preferred routes to avoid a hazardous area or to reduce traffic on key routes. Diversions may be localized around a specific hazard or implemented in advance to warn drivers of the evacuation area. The closure of roads or road segments can help manage traffic during mass evacuations. Road closures may be used to limit traveler exposure to the hazard, divert traffic to preferred routes or destinations, limit the cut-through traffic into areas not equipped to accommodate increased demand, and prevent re-entry to the community before an evacuation order is lifted. Law enforcement or barricades will be required to implement road closures.

The Village of Alix recognizes that people will ideally select their route and destination, as they are more likely to have support at a destination of their choice.

If time and resources allow, law enforcement will be dispersed along evacuation routes to be able to assist in guiding traffic flow.

Communication to Neighbouring Communities:

There must be communication with neighboring areas, especially when a mass evacuation will impact other communities and areas. The Emergency Coordination Centre (ECC) will notify neighboring communities within the Lacombe Regional Emergency Management Partnership.

Types of Evacuation:

There are two types of evacuations: advance notice evacuations and no-notice evacuations. An advance notice evacuation is implemented when the municipality is given enough warning of the threat to carry out an organized evacuation. In situations where an emergency evolves rapidly and there is not enough notice to effectively organize an evacuation, a no-notice evacuation is ordered. No-notice evacuations are carried out on a spontaneous basis, usually by the first response agency with lead jurisdiction over the incident. For no-notice evacuations the threat is imminent, or the emergency has already occurred, and the area is hazardous.

An alternative to evacuation to protect people from adverse weather or outdoor conditions (e.g., poor air quality) is to shelter in a place, in which people take immediate shelter in a building and take steps to prevent outside air from coming in to protect people from adverse weather or outdoor conditions.

INTER-ORGANIZATIONAL NOTIFICATION:

Once the decision to evacuate has been made and the timeline established there are various departments and agencies that will need to be notified. Who needs to be notified will depend on the type and location of the hazard.

These may include, but are not limited to:

- Senior Management Team
- Council
- Alix Fire and Medical Services
- RCMP
- EMS (Ambulance)
- Alberta Transportation
- School District Wolf Creek
- Alberta Emergency Management
- Neighboring communities: Clive and Lacombe County
- Emergency Social Services

RCMP:

Potential roles in evacuation operations:

- Maintain law and order.
- Take all measures within their authority to protect life and property.
- Lead and manage tactical evacuations within RCMP authority and capability. Involved in planning and implementing highway flow operations.
- As tasked by the Emergency Coordination Center (ECC), lead people's physical notification and evacuation
- Provide situational reporting to the Emergency Coordination Center (ECC).
- Provide security to the evacuated area.

Alix Fire and Medical Services:

Potential roles in evacuation operations:

- Lead and manage tactical evacuations within Fire Services authority and capability. Involved in planning and implementing highway control operations.
- Oversee the evacuation of people and animals from buildings when potential life safety is at risk.
- Provide fire suppression operations and the rescue of people trapped by fire, wreckage, and debris,
- Provide first responder medical aid response in conjunction with other responders.
- Activate mutual aid as required.

LOCAL SCHOOLS AND CHILDCARE FACILITIES:

Potential roles in evacuation planning and operations:

- Coordinate the care of children who have been separated from their parents or caregivers during school hours.
- Ensure parents and caregivers have access to appropriate information and support during all evacuations.
- Organize the supervision of students
- Communicate student transportation needs to the Emergency Coordination Center (ECC)
- Evacuate as per site-specific plan.

Appendix A

Voluntary Evacuation Notice

This is _____ of _____
(Name & Position) (Municipality)

An emergency exists in the _____
(Area)

Of the _____
(Municipality)

For your personal safety, evacuation of _____
(Location)

Of _____ is necessary due to _____
(State which parts)

Reception Centres are located at:

- 1) _____
- 2) _____
- 3) _____
- 4) _____

Collection Points:

- 1) _____
- 2) _____
- 3) _____
- 4) _____

If you evacuate with your own vehicle, please report to the assigned reception centre. If you require transportation, go to the collection point. _____

(Location)

If you are physically unable to go to a collection point, Phone: () _____
to make arrangements for pick-up. (Phone)

The evacuation route to follow is: _____
(Describe the route to avoid danger)

All evacuees are requested to report and register at the reception center at _____

(State Location)

If you are staying with friends, advise the reception centre at () _____

(Phone)

You will be advised when the emergency has ended, and it is safe to return to your home.

For additional information listen to the radio _____
(Radio Stations)

and Alberta Emergency Alerts on the television or on the phone app.

(Bring medication, blankets, sleeping bags, personal items, and identification if possible.)

Revised May 2022

Mandatory Evacuation Notice

This is _____ of _____
(Name & Position) (Municipality)

An emergency exists in the _____
(Area)

Of the _____
(Municipality)

For your personal safety, evacuation of _____
(Location)
 Of _____ is necessary due to
(State which parts)

Reception Centres are located at:

- 1) _____
- 2) _____
- 3) _____
- 4) _____

Collection Points:

- 1) _____
- 2) _____
- 3) _____
- 4) _____

If you evacuate with your own vehicle, please report to the assigned reception centre. If you require transportation, go to the collection point. _____

(Location)

If you are physically unable to go to a collection point, Phone: () _____
 to make arrangements for pick-up. (Phone)

The evacuation route to follow is: _____
(Describe the route to avoid danger)

All evacuees are requested to report and register at the reception center at _____
(State Location)

If you are staying with friends, advise the reception centre at () _____
(Phone)

You will be advised when the emergency has ended, and it is safe to return to your home.

For additional information listen to the radio _____
(Radio Stations)

and Alberta Emergency Alerts on the television or on the phone app.

(Bring medication, blankets, sleeping bags, personal items, and identification if possible.)

Revised May 2022